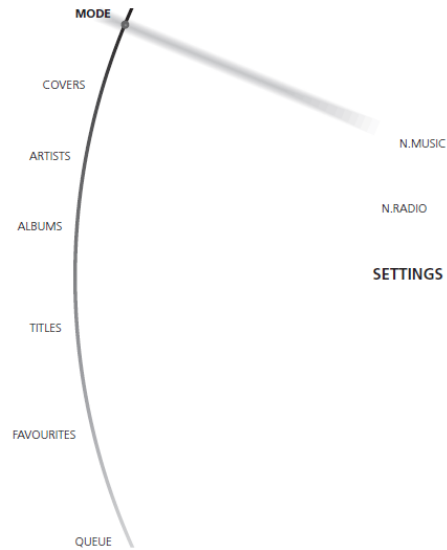


Access to 'Service Menu':

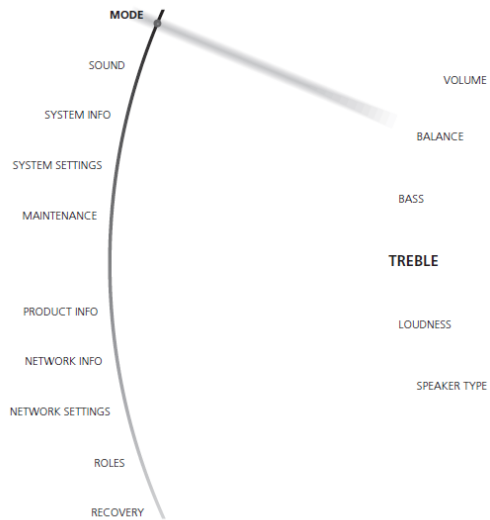
Access to the 'Service Menu' can be obtained in 2 ways, either from BeoSound 5* screen or from BeoMaster 5** (TV screen). Please use the following procedure for a smooth setup:

*** BeoSound 5, 'Service Menu' access (when no TV is connected):**

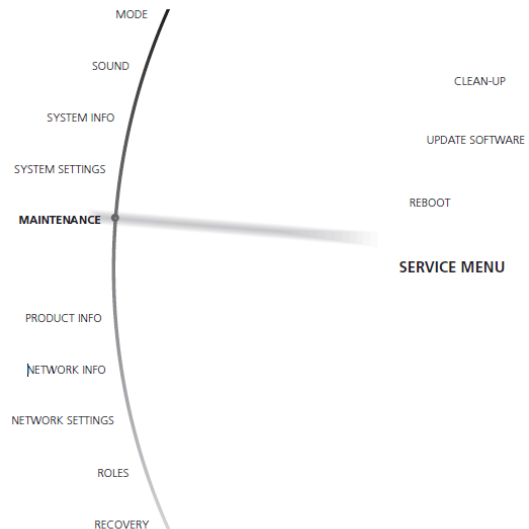
- Move the navigator arm to MODE and use the wheel to highlight SETTINGS.



- On BeoSound 5 keyboard, press: > < > < GO to activate 'Service Settings' (Service Settings appears in left side of the screen, containing new sub menus).

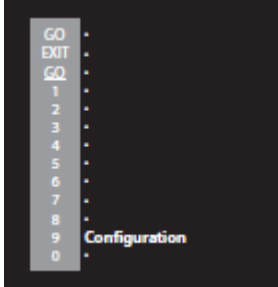


- Move the navigator arm to MAINTENANCE and use the wheel to highlight SERVICE MENU and press GO. Now all active sources related to BeoSound 5 or BeoMaster 5 shuts down, and the 'Service Menu' appears on the screen (see page 3).

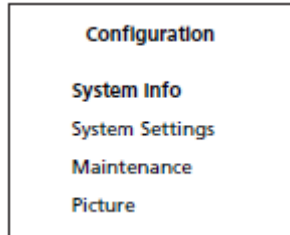


BeoMaster 5, 'Service Menu' access (when TV is connected):

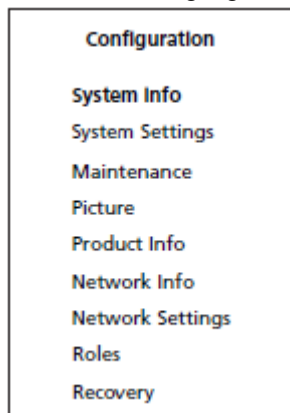
- Beo4: Press MENU 9 to enter the 'Configuration menu'.
- Beo5: Press Menu '+' 9 to enter the 'Configuration menu'.



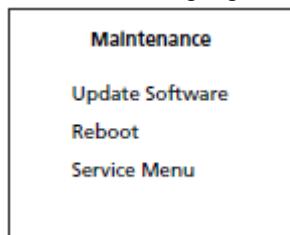
- Beo4: Press 0 0 GO to expand the 'Configuration menu'.
- Beo5: Press 0 0 OK to expand the 'Configuration menu'.



- Beo4: Move highlight text to 'Maintenance' and press GO.
- Beo5: Move highlight text to 'Maintenance' and press OK.



- Beo4: Move highlight text to 'Service Menu' and press GO.
- Beo5: Move highlight text to 'Service Menu' and press OK.



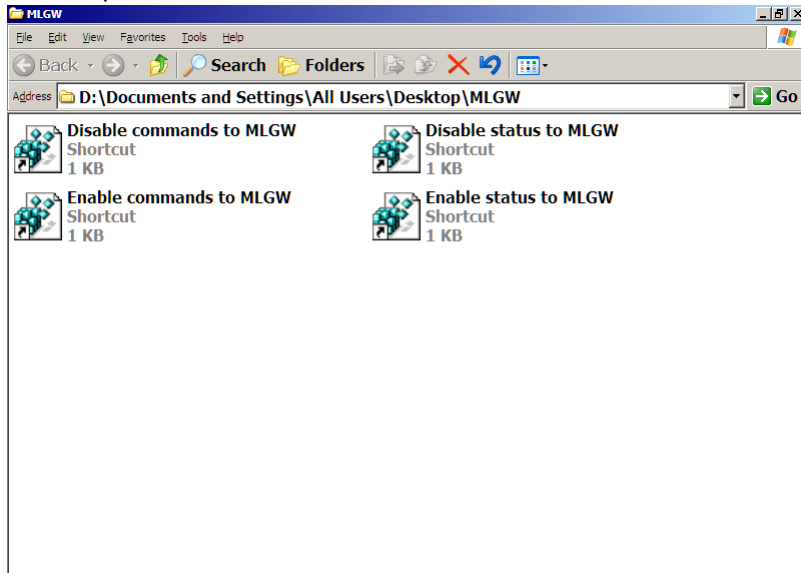
Now all running sources and processes related to BeoSound 5 or BeoMaster 5 shut down, and the Windows Desktop appears on the screen.

Service Menu:



When setting up BeoMaster 5 a USB PC keyboard and mouse must be used.

Select/Open the folder MLGW



Enable commands to MLGW (Master Link Gate Way):

- Will enable reroute of all LIGHT and CONTROL commands from remote to MLGW.
- It is recommended only to have **one product in a room with this setting to enabled**
- Three or more products in a room can cause fail on ML

Enable status to MLGW (Master Link Gate Way)

- Shall only be **enabled if status to a control panels is needed**

Both settings are **default disabled**